



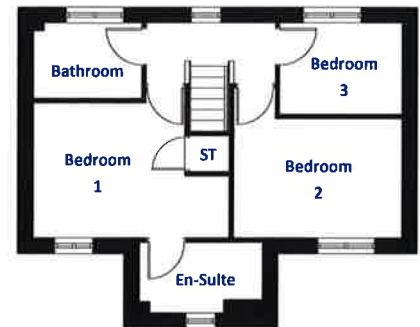
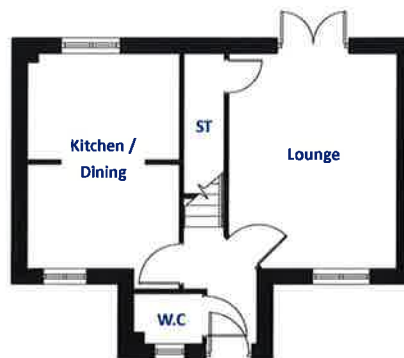
## The Cromford - 3 bedroom home

### Ground Floor

Kitchen / Dining	3175 x 4909	10'5" x 16'1"	†
Lounge	3501 x 4474	11'6" x 14'8"	†
W.C	1426 x 1027	4'8" x 3'4"	

### First Floor

Bedroom 1	4123 x 3099	13'6" x 10'2"	†
En-Suite	2562 x 1455	8'5" x 4'9"	
Bedroom 2	3501 x 3114	11'6" x 10'3"	†
Bedroom 3	2541 x 1889	8'4" x 6'2"	
Bathroom	2265 x 1558	7'5" x 5'1"	



† Denotes the longest measurements taken. These measurements should not be used for the purchase of carpets and curtains. Electrical, plumbing and kitchen layouts are available from the Sales Information Centre. These particulars do not wholly or in part constitute a contract or agreement and are for general guidance only. Artist's impressions are used for illustration purposes only. Elevations, external treatments, chimney's, brick, roof tile colour, window positions and kitchen layouts may vary. Please see our Home Sales Executive for full specification and plot details.



## The Ellis - 4 bedroom home

### Ground Floor

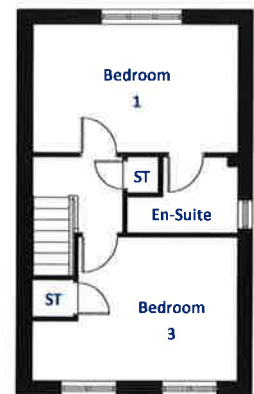
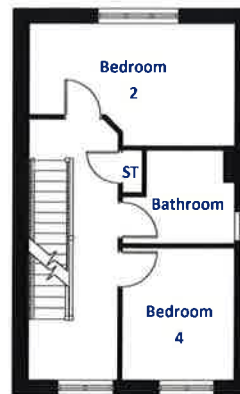
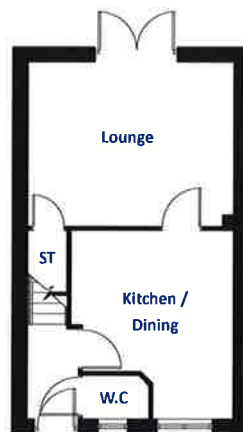
Kitchen / Dining	3523 x 4070	11'7" x 13'4"	↑
Lounge	4464 x 3194	14'8" x 10'6"	↑
W.C	1428 x 917	4'8" x 3'0"	↑

### First Floor

Bedroom 2	4464 x 2642	14'8" x 8'8"	↑
Bedroom 4	2438 x 2856	8'0" x 9'4"	↑
Bathroom	2438 x 2014	8'0" x 6'7"	↑

### Second Floor

Bedroom 1	4464 x 2766	14'8" x 9'1"	↑
En-Suite	2406 x 1636	7'11" x 5'4"	↑
Bedroom 3	4464 x 3109	14'8" x 10'2"	↑



↑ Denotes the longest measurements taken. These measurements should not be used for the purchase of carpets and curtains. Electrical, plumbing and kitchen layouts are available from the Sales Information Centre. These particulars do not wholly or in part constitute a contract or agreement and are for general guidance only. Artist's impressions are used for illustration purposes only. Elevations, external treatments, chimney's, bricks, roof tile colour, window positions and kitchen layouts may vary. Please see our Home Sales Executive for full specification and plot details.



## The Clifford - 4 bedroom home

### Ground Floor

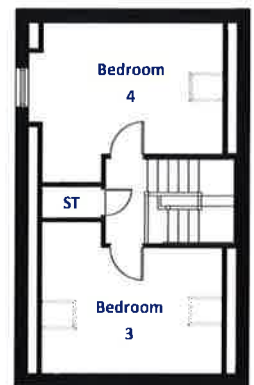
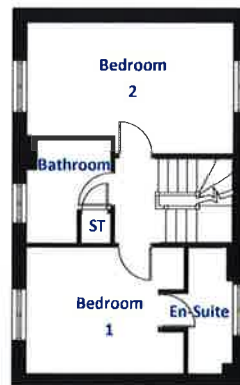
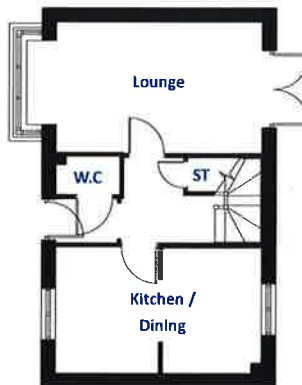
Kitchen / Dining	2906 x 2287	9'6" x 7'6"	↑
Lounge	3021 x 5487	9'11" x 18'0"	↑
W.C	880 x 1483	2'11" x 4'10"	↑

### First Floor

Bedroom 1	2932 x 3666	9'7" x 12'0"	↑
En-Suite	2932 x 1618	9'7" x 5'4"	↑
Bedroom 2	3049 x 4812	10'0" x 15'9"	↑
Bathroom	2402 x 1941	7'11" x 6'4"	↑

### Second Floor

Bedroom 3	3533 x 4227	11'7" x 13'10"	↑
Bedroom 4	3713 x 4519	12'2" x 14'10"	↑



↑ Denotes the longest measurements taken. These measurements should not be used for the purchase of carpets and curtains. Electrical, plumbing and kitchen layouts are available from the Sales Information Centre. These particulars do not wholly or in part constitute a contract or agreement and are for general guidance only. Atlas's impressions are used for illustration purposes only. Elevations, external treatments, chimney's, brick, roof tile colour, window positions and kitchen layouts may vary. Please see our Home Sales Executive for full specification and plot details.



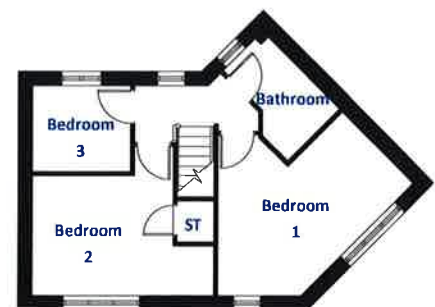
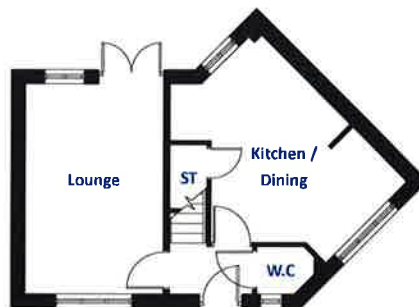
## The Rufford - 3 bedroom home

### Ground Floor

Kitchen / Dining	2626 x 4924	8'7" x 16'2"	↑
Lounge	3193 x 4812	10'6" x 15'9"	↑
W.C	1308 x 1068	4'3" x 3'6"	↑

### First Floor

Bedroom 1	3088 x 3679	10'2" x 12'1"	↑
Bedroom 2	4188 x 3417	13'9" x 11'3"	↑
Bedroom 3	2249 x 1960	7'5" x 6'5"	↑
Bathroom	1673 x 2502	5'6" x 8'3"	↑



↑ Denotes the longest measurement taken. These measurements should not be used for the purchase of carpets and curtains. Electrical, plumbing and kitchen layouts are available from the Sales Information Centre. These particulars do not wholly or in part constitute a contract or agreement and are for general guidance only. Artist's impressions are used for illustration purposes only. Elevations, external treatments, chimney's, brick, steel tile colours, window positions and kitchen layouts may vary. Please see our Home Sales Executive for full specification and plot details.



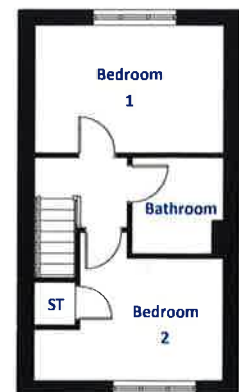
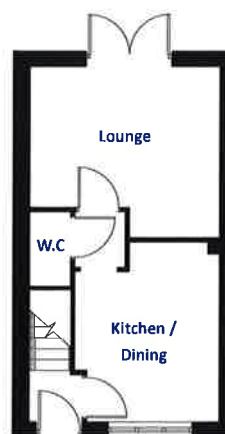
## The Witton - 2 bedroom home

### Ground Floor

Kitchen / Dining	3017 x 3733	9'11" x 12'3"	†
Lounge	3957 x 3554	13'0" x 11'8"	†
W.C	828 x 1538	2'9" x 5'1"	

### First Floor

Bedroom 1	3957 x 2646	13'0" x 8'8"	
Bedroom 2	3957 x 3077	13'0" x 10'1"	†
Bathroom	1913 x 1995	6'3" x 6'7"	



† Denotes the longest measurements taken. These measurements should not be used for the purchase of carpets and curtains. Electrical, plumbing and kitchen layouts are available from the Sales Information Centre. These particulars do not wholly or in part constitute a contract or agreement and are for general guidance only. Artist's impressions are used for illustration purposes only. Elevations, external treatments, chimney's, brick, roof tile colour, window positions and kitchen layouts may vary. Please see our Home Sales Executive for full specification and plot details.